


WARRANTY & REPAIRS

If your CMC product has a defect due to workmanship or materials, please contact CMC Customer Support at info@cmcpro.com for warranty information and service. CMC's warranty does not cover damages caused by improper care, improper use, alterations and modifications, accidental damage or the natural breakdown of material over extended use and time. All repair work shall be performed by the manufacturer. All other work or modifications void the warranty and releases CMC from all liability and responsibility as the manufacturer.

SAMPLE INSPECTION AND MAINTENANCE LOG

The following sample log provides an example of the records that should be maintained by the purchaser or user of life safety equipment.

EQUIPMENT INSPECTION AND MAINTENANCE LOG			
Item _____ # _____		Date in Service _____	
Brand/Model _____		Strength _____	
Date	How Used or Maintained	Comments	Name

 Find the latest version of this manual at cmcpro.com.



NFPA THROWLINE



MEETS THE THROWLINE REQUIREMENTS OF NFPA 1983, INCORPORATED IN THE 2022 EDITION OF NFPA 2500.

293387, THROWLINE, ROPE NFPA, CMC

- MINIMUM BREAKING STRENGTH: 15 KN (3,372 LBF)
- DIAMETER: 7.5 MM
- TYPE OF FIBER(S): HMPE AND POLYPROPYLENE

PART #:
DESCRIPTION:
LENGTH:
MFG LOT #:
MFG LOT DATE:
CUT DATE:
CUT BY:

Manufactured by Teufelberger Fiber Rope Corp.
848 Airport Road, Fall River, MA 02720

⚠ WARNINGS

Activities involving the use of this device are potentially dangerous. You are responsible for your own actions and decisions. Before using this device, you must:

- Read and understand these user instructions, labels, and warnings.
- Familiarize yourself with its capabilities and limitations.
- Obtain specific training in its proper use.
- Understand and accept the risks involved.

FAILURE TO HEED ANY OF THESE WARNINGS MAY RESULT IN SEVERE INJURY OR DEATH.

Legend



Imminent risk of serious injury or death.



Imminent risk of accident or injury.



Appropriate function or use.




Equipment incompatibility.



CMC Rescue, Inc.
6740 Cortona Drive
Goleta, CA 93117, USA
805-562-9120 / 800-235-5741
cmcpro.com

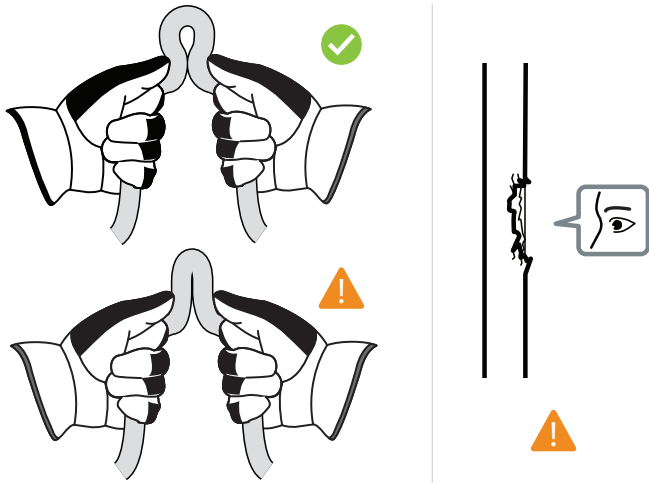
ISO 9001 Certified

© CMC Rescue, Inc. All rights reserved

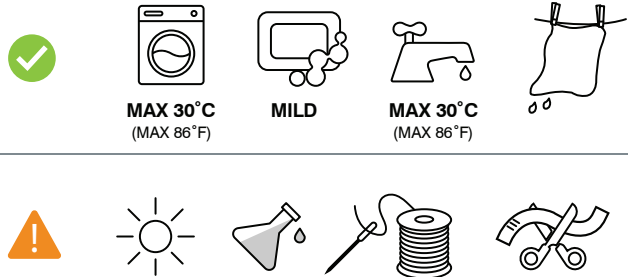
CMC and  are registered marks of CMC Rescue Inc.

CMC Control No.: 293387IN01_Rev00

Before Each Use



Carrying, Maintenance, Storage & Transport



USER INFORMATION

User Information shall be provided to the user of the product. NFPA Standard 1983, incorporated into the 2022 edition of NFPA 2500 recommends separating the User Information from the equipment and retaining the information in a permanent record. The standard also recommends making a copy of the User Information to keep with the equipment and that the information should be referred to before and after each use.

Additional information regarding life safety equipment can be found in NFPA 1500 and NFPA 1858 and NFPA 1983, incorporated in the 2022 edition of NFPA 2500.

LIFESPAN / INSPECTION / RETIREMENT

The equipment has a lifespan of 10 years from the date of manufacture shown on the product label. The type of use, intensity of use, and environment of use are all factors in determining serviceability of the equipment. A single exceptional event can be cause for retirement after only one use, such as exposure to sharp edges, extreme temperatures, chemicals, or harsh environments. Any concerns about its safe use is cause for retirement. Remove retired equipment from service and destroy it to prevent further use.

Equipment must be retired when:

- It has reached the 10 year age limit.
- It has been subjected to a major event (fall, shockload etc.).
- It has been exposed to extreme environments (sharp edges, high temperatures, corrosive environment etc.) or become contaminated (chemicals etc.).
- It fails to pass inspection or there are any doubts about its reliability.
- It has an uncertain usage history.
- It becomes obsolete due to changes in legislation, standards, technique or compatibility

Inspect the equipment according to your department's policy for inspecting life safety equipment. CMC recommends a detailed inspection by a competent person at least once every 12 months depending on current regulations and conditions of use. Record the date, inspector name, and inspection results in the equipment log as well as any other relevant information to track the usage history.

Before and after each use, the user should:

- Check the equipment for signs of wear, damage, or contamination. See the specific Inspection Criteria in the following section.
- Check for the presence of dirt or foreign objects that can affect or prevent normal operation (e.g. grit, sand, etc.).

During each use, the user should:

- Monitor the condition of the product. Hazards may affect the performance of the equipment such as extreme temperatures, sharp edges, chemical reagents, electrical conductivity, cutting, abrasion, climatic exposure, and pendulum falls.
- Evaluate environmental conditions. Damp or icy environments can alter the behavior of the product.
- Check the condition of attachment points and the connections to other equipment in the system.
- Make sure that all pieces of equipment in the system are correctly positioned with respect to each other.
- Connectors should be loaded in their strongest orientation.

INSPECTION CRITERIA

Inspecting rope involves visually looking for damage, feeling for damage, and checking the rope's history in the rope log. Inspect a new rope before it is put into service and then after each use. The inspection should be done by an experienced person deemed qualified by the agency/organization.

A complete inspection includes a visual and a tactile inspection. Visually inspect the sheath to identify chafed areas, glazed surfaces, discoloration, or variations in diameter. These areas should receive additional scrutiny during the tactile inspection. Look for areas of abrasion or cuts in the sheath where the core is exposed or enough of the sheath is worn that its ability to protect the core is compromised. The tactile inspection should be done with tension on the rope. Feel for variations in size and soft or hard spots that could indicate damage to the core or rope that has been overstressed. Specific inspection criteria are listed below.

Abrasion / Sheath Wear - rope maybe severely damaged if subjected to rough surfaces or sharp edges. Retire if the core is exposed or more than 1/4 of the outer sheath yarns are abraded. Exposed core fibers indicate severe sheath damage and possible core damage.

Fraying - indicates broken or damaged sheath bundles which is an indication of abrasion or overloading. A pulled strand can snag on foreign objects during a rope operation.

Glazing - glossy marks or hard, stiff areas may signify heat or friction damage. This can be caused by contact with a descender that has become overheated in a fast rappel.

Discoloration - a change in the rope's original color is an indication of chemical damage or exposure to the elements of nature including Ultraviolet [UV] radiation.

Lack of Uniformity in Diameter or Size - a depression in the diameter of the rope, lumpiness of the rope, or exposed core strands protruding from the rope may indicate core damage.

Inconsistency in Texture - possible indication of excessive wear. This is most often noted as soft or stiff areas in the rope. Both outer and inner rope fibers contribute to the strength of the rope. When either fibers are worn, the rope is weakened. A heavily-used rope will often become compacted or hard which indicates reduced strength.

Use / Age - We recommend a low elongation / static rope be removed from service no more than ten years from its manufactured date. Accurate record keeping, with a careful inspection program, are the best methods for determining when to remove a rope from service.

Loss of Faith - if you feel uncomfortable for any reason or suspect there may be a problem with your rope it should be retired and destroyed.

If any of the above are noted, the rope should be retired from service. If the rope has been subjected to shock loads, fall loads, or abuse, remove it from service.

LIMITATIONS AND PROPER USE

CMC NFPA Throwline is designed to fulfill the NFPA definition of a Throwline as "a floating rope that is intended to be thrown to a person during water rescues or as a tether for rescuers entering the water."

Be sure anchor points are suitable for the load to be applied. Limit slack in the rope to reduce the possibility of accidentally subjecting the rope, anchor points, and persons to an accidental dynamic loading or impact force. Avoid sudden strains or shock loads, which can exceed breaking strength. Shock loading can cause failure of a rope normally strong enough to handle the load.

Prior to use of this equipment, a suitable rescue plan should be prepared in the event of a mishap. Reverse rope ends regularly. This permits even wearing and assures a longer useful life. Do not overload rope.

ADDITIONAL GUIDANCE

Sheath protection - Take care to protect your rope from abrasion. Always use a proper rope pad or edge guard. Sheath damage is the most common cause of early rope retirement. Be sure to properly pad surfaces to which the rope is exposed. Be especially sure to inspect hardware for flaws that may damage the sheath strands.

Rope cleanliness - Dirt, mud, and grit will shorten the life of your rope by increasing internal and external abrasion. See the maintenance section for guidance on cleaning. Stepping on a rope has the potential to cause cuts and may grind grit into the core causing internal abrasion. A ground cloth should be used to keep the rope from being in direct contact with mud, dirt, and grit.

Open flame and high temperatures - Do not expose rope to flame or high temperatures as it will melt or burn causing rope failure.

Accidental dynamic loading - When a load is picked up, stopped, moved, or swung, there is an increased force due to dynamic loading. The more rapidly or suddenly such actions occur, the greater the increase force will be. In extreme cases, the force put on the rope may be two, three, or even more times the normal load involved. If accidental dynamic loading does occur, the rope must be inspected and considered for retirement.

Chemical contamination - Protect your rope from exposure to harsh chemicals. Exposure to chemicals will cause failure that can result in injury or death. Do not allow your rope to come into contact with any compounds containing acids, alkalis, oxidizing agents, phenol or bleaching compounds. Be especially careful to avoid contact with battery acid. Contaminants can be in the form of liquids, solids, mists and vapors. Contamination may, or may not, be visible and may, or may not be, detectable. If you suspect your rope has been contaminated, remove it from service.

Ultraviolet ray exposure - Ropes should always be stored in a rope bag to reduce the possibility of exposure to contaminants and unnecessary exposure to Ultraviolet [UV] rays. Solar degradation should be checked by rubbing the surface of the rope with your thumbnail. If degradation has taken place, the surface material will come off as powder.

CARRYING, MAINTENANCE & STORAGE

During all use, carrying, storage, and transport keep the equipment away from acids, alkalis, exhaust emissions, rust and strong chemicals. Do not expose the equipment to direct heat, flame, or high temperatures or other adverse environmental conditions.

If the equipment becomes soiled, it can be washed in cold water with a mild detergent. Soak the rope for about 30 minutes in a plastic tub of water with a mild detergent. Do not use any cleaners with bleach or bleach substitutes. Rinse the rope thoroughly. It is recommended to pull it through a rope washer twice. Do not use a pressure washer. Air dry in temperatures between 10° C and 30° C. Do not dry the equipment in direct sunlight or using an automatic dryer. Hang the rope in a cool, shady place to dry. Do not dry rope in the sun because of the damaging effects on the fibers from prolonged exposure to ultraviolet rays. During storage and transport, protect the equipment from heat, direct sunlight, moisture, chemicals, and external loads or impacts. If rope has been stored at elevated temperatures over an extended period, it can fail under loads below its rated breaking strength. Consult with the manufacturer in case of any doubt.