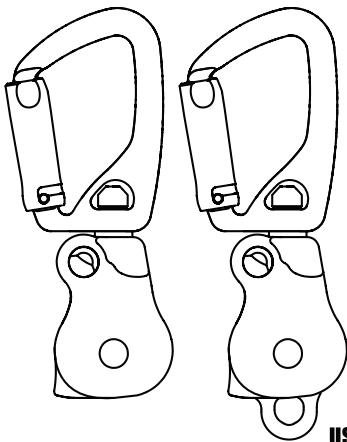




CMC PROSWIVEL™ SWIVABINER



MEETS THE PULLEY REQUIREMENTS OF NFPA 1983, INCORPORATED IN THE 2022 EDITION OF NFPA 2500.

- 300435-01 CMC PROSWIVEL SWIVABINER TECHNICAL USE (T) 22 kN (4,946 lbf)
- 300439 CMC PROSWIVEL DOUBLE SWIVABINER TECHNICAL USE (T) 22 kN (4,946 lbf)

CARABINER FRAMES TESTED TO MEET THE MINIMUM REQUIREMENTS OF NFPA T RATING.

MBS ◀▶ 22 kN MAJOR AXIS

MBS ⚡ 10 kN MINOR AXIS

MBS Ⓞ 10 kN GATE OPEN

⚠ WARNINGS

Activities involving the use of this device are potentially dangerous. You are responsible for your own actions and decisions. Before using this device, you must:

- Read and understand these user instructions, labels, and warnings.
- Familiarize yourself with its capabilities and limitations.
- Obtain specific training in its proper use.
- Understand and accept the risks involved.

FAILURE TO HEED ANY OF THESE WARNINGS MAY RESULT IN SEVERE INJURY OR DEATH.

Legend



Imminent risk of serious injury or death.



Imminent risk of accident or injury.



Appropriate function or use.



Equipment incompatibility.



Find the latest version of this manual at cmcpro.com.

USER INFORMATION

User Information shall be provided to the user of the product. NFPA Standard 1983, incorporated into the 2022 edition of NFPA 2500 recommends separating the User Information from the equipment and retaining the information in a permanent record. The standard also recommends making a copy of the User Information to keep with the equipment and that the information should be referred to before and after each use.

Additional information regarding life safety equipment can be found in NFPA 1500 and NFPA 1858 and NFPA 1983, incorporated in the 2022 edition of NFPA 2500.

LIFESPAN / INSPECTION / RETIREMENT

CMC does not specify an expiration date for hardware because the service life depends greatly on how and where it is used. The type of use, intensity of use, and environment of use are all factors in determining serviceability of the equipment. A single exceptional event can be cause for retirement after only one use, such as exposure to sharp edges, extreme temperatures, chemicals, or harsh environments. Remove retired equipment from service and destroy it to prevent further use.

A device must be retired when it fails to pass inspection; it fails to function properly; it has illegible product markings; it shows signs of damage or excessive wear; it has been subjected to shock loads, falls, or abnormal use; it has been exposed to harsh chemical reagents; it has an unknown usage history; there is any doubt as to its condition or reliability; or when it becomes obsolete due to changes in legislation, standards, technique or incompatibility with other equipment.

Inspect the equipment according to your department's policy for inspecting life safety equipment. CMC recommends a detailed inspection by a competent person at least once every 12 months depending on current regulations and conditions of use. Record the date, inspector name, and inspection results in the equipment log as well as any other relevant information to track the usage history.

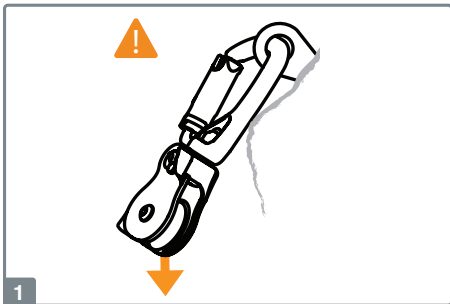
Before each use, the user should confirm the device is functioning properly; verify the presence and legibility of the product markings; and verify there is no excessive wear or indications of damage such as deformation, corrosion, sharp edges, cracks, or burrs. Minor nicks or sharp spots may be smoothed with emery cloth or similar. Check for the presence of dirt or foreign objects that can affect or prevent normal operation such as grit, sand, rocks, and debris.

During each use, the user should confirm all pieces of equipment in the system are correctly positioned with respect to each other; monitor the condition of the device and its connections to other equipment in the system; do not allow anything to interfere with the operation of the device or its components; and keep foreign objects out of the device.

LIMITATIONS AND PROPER USE

SWIVEL FUNCTION: For orientation only. Not for high speed or multi-rotation:

1. Verify swivels rotate freely. Swivel-type devices must NEVER be used with steel cable or wire rope unless the wire rope manufacturer verifies such use is approved and that the cable/rope will not unwind when used with a swivel.
2. Verify spring pin is in place and has not been removed.



3. Ensure swivel axle has not loosened by checking axle head with your fingers and making sure swivel top does not move up or down.

MANDATORY CARABINER LOCKING PROCEDURE: Serious accidents have resulted from unlocked carabiners. Dirt, ice, etc. can jam a sleeve. Never assume auto-lock carabiners lock on closing always confirm! You must understand how the sleeve works and know what it looks like when it is locked and unlocked. You must do the following every time you clip a locking carabiner:

1. Visually confirm the carabiner is locked.
2. Push in on the gate/sleeve to confirm by touch that it is locked.

Do not allow ropes or objects to rub or twist the sleeve because this could unlock it. Vibration can also unlock a sleeve. Regularly check that the carabiner is locked and positioned properly and always do so if items contact it or anything unusual occurs. Sleeves must be locked to achieve full strength.

MANDATORY PULLEY LOCKING PROCEDURE: The sideplate must be closed and locked with the button fully extended, or strength will be greatly reduced and the rope may fall out with catastrophic results. See fig. 2. You must understand how the sideplate & locking button work & must faithfully do the following every time you use it:

1. Visually confirm the sideplate is fully closed and the locking button is fully extended.
2. Test the sideplate by attempting to rotate it to confirm by touch that it is locked.

Do not allow anything to contact the button in use. Regularly check that the sideplate is locked and the pulley is positioned properly. If the pulley cannot be kept in sight, use a conventional pulley.

WARNINGS: Strength - In a pulley, half the load is on one side of the rope and half is on the other. The total load on each sheave can be up to 2x the load being raised or lowered. In a double pulley the total load is 4x the load on the 4 individual ropes. This is illustrated on the pulley. Breaking Strength & Working Load are based on this equal loading. If the sideplate is not fully locked by the button, the strength will be severely reduced, to about 10kN, but also, the rope may fall out. Pulleys must be free to align with the load, any restraint is dangerous.

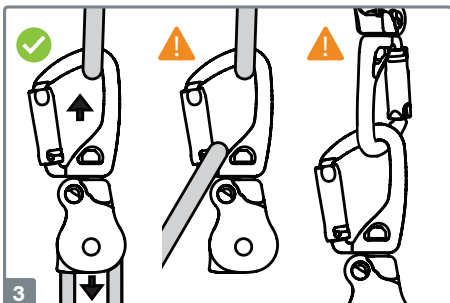
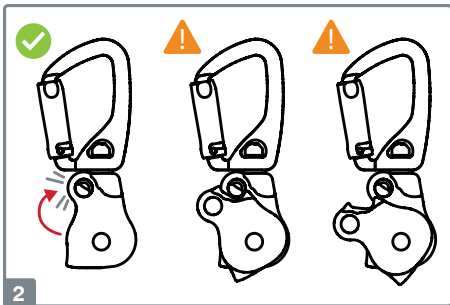
PRUSIK USE - CAUTION! Prusiks must always have an experienced person tending them. Never allow a jammed Prusik to be pulled in between the sideplates. This can bend or break the pulley and allow the rope to fall out!

BREAKAGE HAZARD

DANGER! NEVER APPLY A BENDING FORCE!

Due to leverage, even a small amount of weight can cause catastrophic breakage. Never use when bending could occur! Do not let an object in between the sideplates and never rig your system so that the pulley is forced against something that could break or open the sideplate, allowing the rope to fall out. See fig. 1.

The Omni-Block SwivaBiner must only be used in a straight pull. It must NEVER be subjected to a bending force. Only loading shown in the figure with the checkmark is allowed. See fig. 3.



CARRYING, MAINTENANCE & STORAGE

During all use, carrying, storage and transport keep the equipment away from acids, alkalis, rust and strong chemicals. Do not expose the equipment to direct heat, flame or high temperatures. Clean equipment using clean fresh water to remove any dust or debris. Do not use a pressure washer for cleaning. If the equipment gets wet, remove excess moisture and allow to air dry at temperatures between 10° C and 30° C. Lubricate moving parts as needed. During storage and transport, protect the equipment from heat, direct sunlight, moisture, chemicals, and external loads or impacts. Do not store where the equipment may be exposed to moist air, particularly where dissimilar metals are stored together.

WARRANTY & REPAIRS

If your CMC product has a defect due to workmanship or materials, please contact CMC Customer Support at info@cmcpro.com for warranty information and service.

CMC's warranty does not cover damages caused by improper care, improper use, alterations and modifications, accidental damage or the natural breakdown of material over extended use and time.

The equipment should not be modified in any way or altered to allow attachment of additional parts without the manufacturer's written recommendation. If original components are modified or removed from the product, its safety aspects may be restricted. All repair work shall be performed by the manufacturer. All other work or modifications void the warranty and releases CMC from all liability and responsibility as the manufacturer.

SAMPLE INSPECTION AND MAINTENANCE LOG

The following sample log provides an example of the records that can be maintained by the purchaser or user.

Equipment Inspection and Maintenance Log				
Item	#	Date in Service		
Brand/Model	Strength			
Date	How Used or Maintained	Comments	Name	



CMC Rescue, Inc.
6740 Cortona Drive
Goleta, CA 93117, USA
805-562-9120 / 800-235-5741
cmcpro.com

ISO 9001 Certified

©2021 CMC Rescue, Inc. All rights reserved
CMC and **XX** are registered marks of CMC Rescue Inc.
CMC Control No.: 30043X-011N02_Rev00